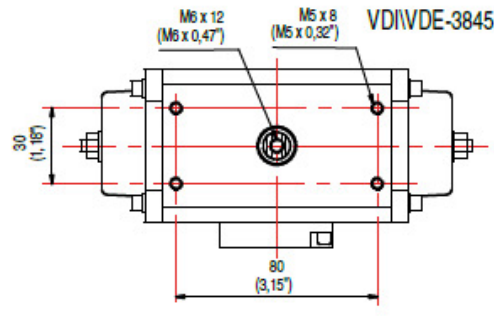
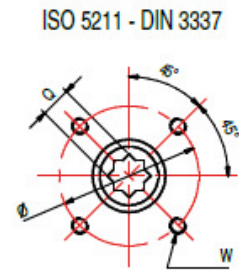
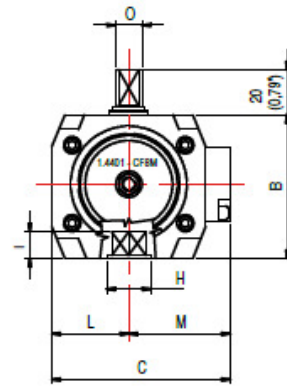
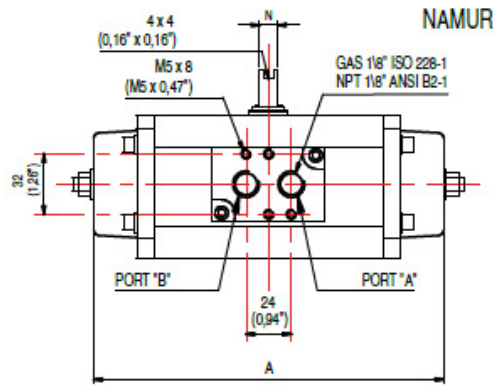




Alphaair INOX

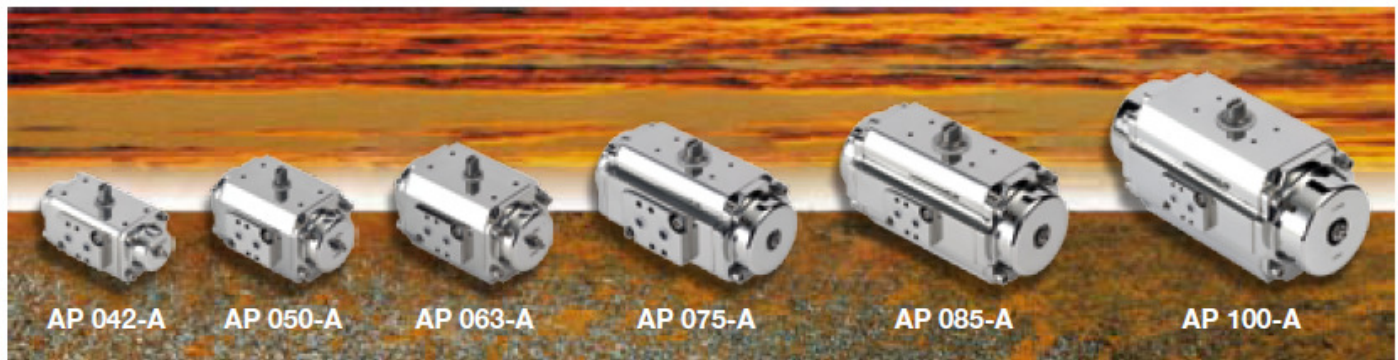
ALPHA α POMPE

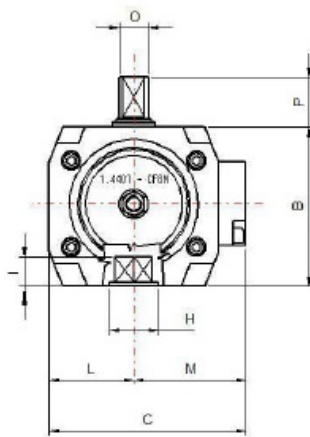
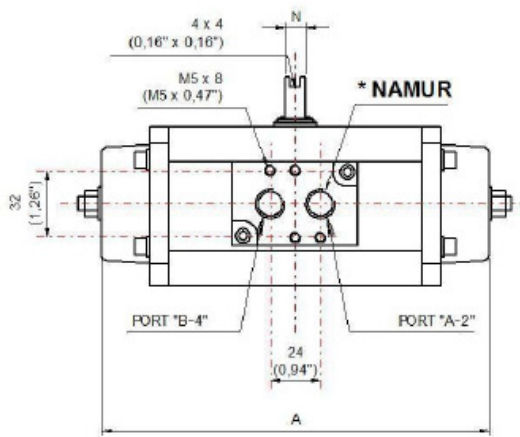


ISO 5211 - DIN 3337					
	F03	F04	F05	F07	F10
Ø	36 (1,42")	42 (1,65")	50 (1,97")	70 (2,57")	102 (4,01")
W	M 5x8 (M 5x0,32")	M 5x8 (M 5x0,32")	M 6x9 (M 6x0,35")	M 8x12 (M 8x0,47")	M 10x15 (M 10x0,59")

Dimensioni - Dimensions - Maße - Dimensions

	ISO 5211 DIN 3337	Q x I	A	B	C	L	M	N	O
AP 042-A	F03\05 F04	11 x 13 (0,43" x 0,51")	140 (5,50")	57 (2,24")	71 (2,79")	30,5 (1,20")	40,5 (1,59")	8 (0,31")	12 (0,47")
			"Y" (120°) A=194 (7,94") F03\05 H=25 (0,98")		"X" (180°) A=230 (9,05") F04 H=30 (1,18")				
AP 050-A	F03\05 F04	11 x 13 (0,43" x 0,51")	138 (5,43")	67 (2,63")	93 (3,65")	41,5 (1,63")	51,5 (2,02")	8 (0,31")	12 (0,47")
			"Y" (120°) A=172 (6,77") F03\05 H=25 (0,98")		"X" (180°) A=211 (8,31") F04 H=30 (1,18")				
AP 063-A	F03\05 F05\07	14 x 16 (0,55" x 0,63")	152 (5,97")	83 (3,26")	93 (3,65")	41,5 (1,63")	51,5 (2,02")	8 (0,31")	12 (0,47")
			"Y" (120°) A=201 (7,91") F03\05 H=25 (0,98")		"X" (180°) A=220 (8,66") F05\07 H=30 (1,18")				
AP 075-A	F05\07	17 x 20 (0,67" x 0,79")	210 (8,27")	100 (3,93")	108 (4,24")	49 (1,93")	59 (2,32")	14 (0,55")	18 (0,71")
			"Y" (120°) A=249 (9,80") F05\07 H=40 (1,57")		"X" (180°) A=298 (11,73") F05\07 H=40 (1,57")				
AP 085-A	F05\07	17 x 20 (0,67" x 0,79")	230 (9,04")	110 (4,32")	118 (4,64")	54 (2,12")	64 (2,52")	14 (0,55")	18 (0,71")
			"Y" (120°) A=282 (11,01") F05\07 H=40 (1,57")		"X" (180°) A=338 (13,31") F05\07 H=40 (1,57")				
AP 100-A	F07\10	22 x 25 (0,87" x 0,98")	257 (10,81")	125 (4,91")	135 (5,30")	62,5 (2,46")	72,5 (2,85")	14 (0,55")	18 (0,71")
			"Y" (120°) A=332 (13,07") F07\10 H=55 (2,15")		"X" (180°) A=401 (15,79") F07\10 H=55 (2,15")				

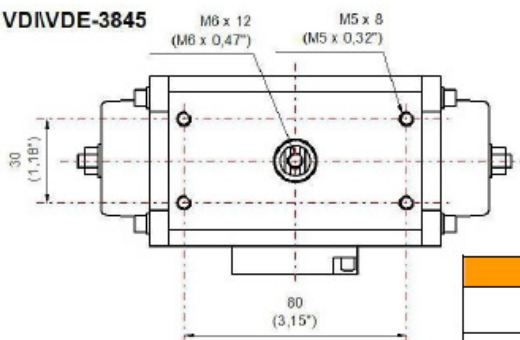




ISO 5211 - DIN 3337



VDI/VDE-3845



- * AP 042/050-A: NAMUR 1/8" GAS ISO 228-1
NAMUR 1/8" NPT ANSI B2-1
- * AP 063/075/085/100/115/125: NAMUR 1/4" GAS ISO 228-1
NAMUR 1/4" NPT ANSI B2-1
- * AP 145-A: NO NAMUR connections: n° 1 1/4" GAS - NPT body
n° 2 1/4" GAS - NPT covers

ISO 5211 - DIN 3337

	F03	F04	F05	F07	F10	F12
Φ	36 (1,42")	42 (1,65")	50 (1,97")	70 (2,57")	102 (4,01")	125 (4,92")
W	M 5x8 (M 5x0,32")	M 5x8 (M 5x0,32")	M 6x9 (M 6x0,35")	M 8x12 (M 8x0,47")	M 10x15 (M 10x0,59")	M 12x18 (M 12x0,71")

Dimensioni - Dimensions - Maße - Dimensions

	ISO 5211 DIN 3337	Q x I	A	B	C	L	M	N	O	P
AP 042-A	F03\05 F04	Q 11 x 13 (0,43" x 0,51")	138 (5,50")	57 (2,24")	71 (2,79")	30,5 (1,20")	40,5 (1,59")	8 (0,31")	12 (0,47")	20 (0,79")
			"Y" (120°) A=154 (6,06")		"X" (180°) A=190 (7,48")		F03\05 H=25 (0,98") F04 H=30 (1,18")			
AP 050-A	F03\05 F04	Q 11 x 13 (0,43" x 0,51")	138 (5,43")	67 (2,63")	79 (3,11")	41,5 (1,63")	51,5 (2,02")	8 (0,31")	12 (0,47")	20 (0,79")
			"Y" (120°) A=163 (6,42")		"X" (180°) A=196 (7,72")		F03\05 H=25 (0,98") F04 H=30 (1,18")			
AP 063-A	F03\05 F05\07	Q 14 x 16 (0,55" x 0,63")	152 (5,97")	83 (3,26")	103 (3,65")	41,5 (1,63")	61,5 (2,02")	8 (0,31")	12 (0,47")	20 (0,79")
			"Y" (120°) A=180 (7,09")		"X" (180°) A=214 (8,42")		F3\5\7 H=25			
AP 075-A	F05\07	Q 17 x 20 (0,67" x 0,79")	210 (8,27")	100 (3,93")	118 (4,24")	49 (1,93")	69 (2,32")	14 (0,55")	18 (0,71")	20 (0,79")
			"Y" (120°) A=239 (9,41")		"X" (180°) A=297 (11,69")		F05\07 H=40 (1,57")			
AP 085-A	F05\07	Q 17 x 20 (0,67" x 0,79")	230 (9,04")	110 (4,32")	128 (4,64")	54 (2,12")	74 (2,52")	14 (0,55")	18 (0,71")	20 (0,79")
			"Y" (120°) A=273 (10,75")		"X" (180°) A=332 (13,07")		F05\07 H=40 (1,57")			
AP 100-A	F07\10	Q 22 x 25 (0,87" x 0,98")	257 (10,81")	125 (4,91")	145 (5,30")	62,5 (2,46")	82,5 (2,85")	14 (0,55")	18 (0,71")	20 (0,79")
			"Y" (120°) A=322 (12,68")		"X" (180°) A=398 (15,67")		F5\7\10 H=55 (2,15")			
AP 115-A	F07\10	Q 22 x 25 (0,87" x 0,98")	307 (12,08")	142 (5,59")	166 (6,14")	73 (2,87")	93 (3,27")	27 (1,06")	36 (1,42")	30 (1,18")
			"Y" (120°) A=363 (14,29")		"X" (180°) A=451 (17,75")		F07\10 H=55 (2,15")			
AP 125-A	F7\10\12	Q 27 x 30 (1,06" x 1,18")	359 (14,13")	155 (6,10")	178 (6,61")	79 (3,11")	99 (3,50")	27 (1,06")	36 (1,42")	30 (1,18")
			"Y" (120°) A=424 (16,70")		"X" (180°) A=518 (20,39")		F7\10\12 H=55 (2,15")			
AP 145-A	F10\12	Q 27 x 30 (1,06" x 1,18")	388 (15,28")	175 (6,89")	200 (7,87")	95 (3,75")	105 (4,13")	27 (1,06")	36 (1,42")	30 (1,18")
			F10\12 H=70 (2,76")							