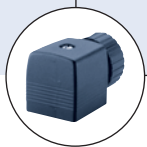




3/2-way Solenoid Valve for gases and liquids

- 3/2-way servo assisted piston valve
- for neutral gases and liquids up to 16 bar
- high reliability
- pilot valve with separating diaphragm
- with manual override

Type 0340 can be combined with...



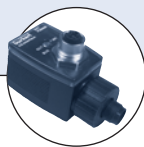
Type 2508

Cable plug



Type 1078

Timer unit



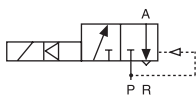
Type 2511

ASI cable plug

The pilot-controlled 3/2-way solenoid valve Type 0340 with smoothly operating servo-piston requires a differential pressure of 0,5 bar for complete opening and closing. A diaphragm separates the operating medium from the drive. It can be used in many ways, even for dry running.

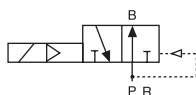
Manual override as standard.

Circuit function C



3/2-way valve, when de-energized outlet port A exhausted, with 3-way pilot control

Circuit function D



3/2-way valve, when de-energized outlet port B pressurized, with 3-way pilot control

Technical data

Orifice	DN 8.0 - 40 mm
Body material	Brass
Seal material	NBR
Media	Neutral media Compressed air, water, hydraulic oil
Media temperature	0 to +90 °C
Ambient temperature	Max. +55 °C
Viscosity	Max. 21 mm ² /s
Voltage tolerance	±10%
Duty cycle	100% continuous rating
Electrical connection	Cable plug for Ø 7 mm cable (supplied as standard)
Protection class	IP 65 with cable plug
Installation	As required, preferably with actuator upright

Flow rate Kv value water [m ³ /h]	measured at +20°C, 1 bar pressure at valve inlet and free outlet
Pressure values [bar]	gauge pressures with respect to the prevailing atmospheric pressure
Response times [ms] Opening Closing	measured with water at valve outlet at 6 bar and +20°C pressure build-up 0 to 90% pressure decay 100 to 10%

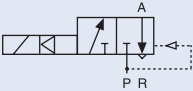
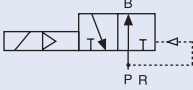
Technical data

Orifice [mm]	Kv value Water P→A [m³/h]	Port connection A/B und P	Pressure range [bar]	Power consumption				Response times		Weight [kg]
				Inrush AC [VA]	DC [W]	Hold AC [VA/W]	DC [W]	Opening [ms]	Closing [ms]	
8	0.95	G 1/4	0.5 - 16	30	8	15/8	8	25	25	1.0
12	2.30	G 3/8						30	30	1.2
12	2.60	G 1/2						30	30	1.2
20	6.60	G 3/4						40	40	2.2
25	10.00	G 1	0.5 - 10					70	70	2.7
40	24.00	G 1 1/2						120	120	6.8

Port R is one orifice size larger than the ports A/B and P (see Dimensional Table). As a result, the flow A→R is increased by the factor 1.5 to 2 over the value in the table.

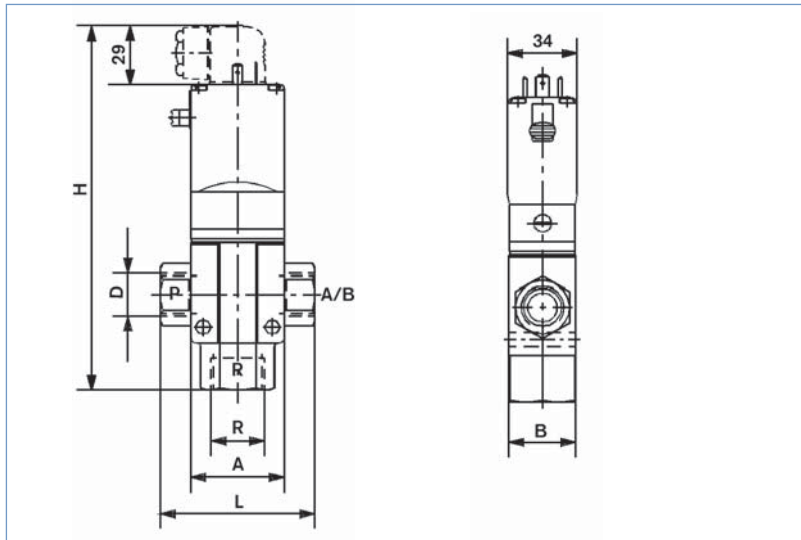
Ordering chart for valves (other versions on request)

All valves with manual override, brass body, NBR seal and cable plug

Circuit function	Orifice [mm]	Port connection	Kv value water P→A [m³/h]	Pressure range [bar]	Voltage/frequency [V/Hz]	Item no.
C  3/2-way valve NC	8.0	G 1/4	0.95	0.5 - 16	012/DC	042 506
					024/DC	041 317
					024/50	041 318
					110/50	041 325
					230/50	041 329
	12	G 3/8	2.3	0.5 - 16	024/50	041 351
					230/50	041 353
		G 1/2	2.6	0.5 - 16	024/DC	041 333
					024/50	041 334
					110/50	041 340
					230/50	041 346
	20	G 3/4	6.6	0.5 - 16	240/50	042 277
					024/DC	041 354
					024/50	041 665
					110/50	041 359
	25	G 1	10.0	0.5 - 10	230/50	041 361
024/DC					041 537	
110/50					042 864	
40	G 1 1/2	24.0	0.5 - 10	230/50	041 364	
				024/DC	042 319	
				230/50	041 366	
D  3/2-way valve NO	8.0	G 1/4	0.95	0.5 - 16	024/DC	041 367
					024/50	041 368
					230/50	041 371
	12	G 3/8	2.3	0.5 - 16	230/50	041 386
					024/DC	041 374
		G 1/2	2.6	0.5 - 16	024/50	041 375
					230/50	041 380

DTS 1000010929 EN Version: C Status: RL (released | freigegeben | validé) printed: 03.07.2006

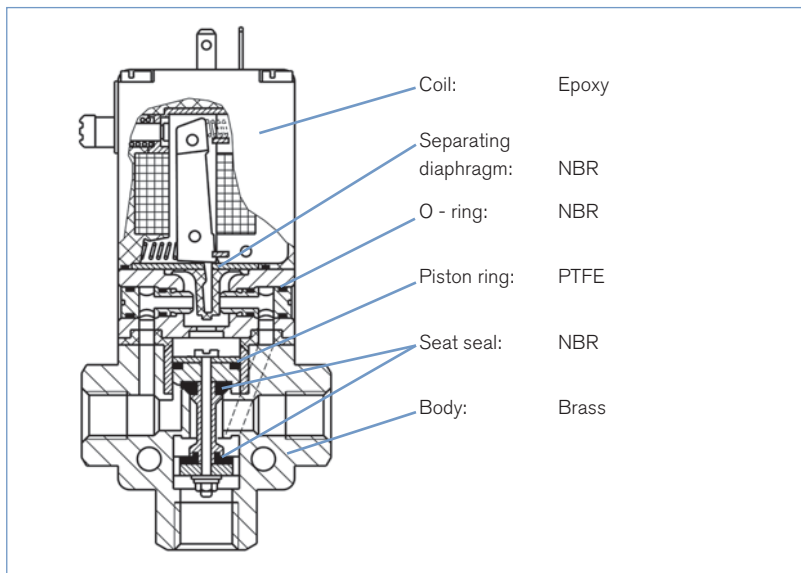
Dimensions [mm]



DN	A	B	D	H	L	R
8	46	33	G 1/4	154.5	65	G 3/8
12	46	33	G 3/8	179.5	76	G 3/4
12	46	33	G 1/2	179.5	76	G 3/4
20	62	52	G 3/4	215.5	90	G 1
25	82	60	G 1	237.5	110	G 1 1/4
40	117	88	G 1 1/2	274.0	153	G 2

This dimensional drawing shows a valve in circuit function C with port designations P, R and A/B (see figure on the front page). In circuit function D, the manual override is located above the port connection A/B.

Material



To find your nearest Bürkert facility, click on the orange box →

www.burkert.com

In case of special application conditions,
please consult for advice.

We reserve the right to make technical
changes without notice.

0606/2_EU-en_00891626